

HARRIMAN

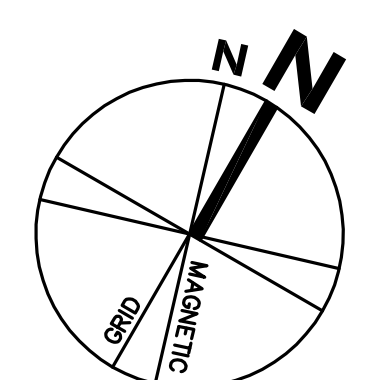
AUBURN BOSTON PORTLAND PORTSMOUTH

EDWARD LITTLE HIGH SCHOOL

AUBURN, MAINE
Harriman Project No. 16654
Key Plan

- LANDSCAPE NOTES
1. SEE GENERAL NOTES 0002
 2. SEE SHEET 0001 - SITE PLAN
 3. SEE SHEET 0001 - GRADING AND E.C. PLAN
 4. LAWN & SEED ALL DISTURBED AREAS NOT OTHERWISE REVEGETATED
 5. ALL PLANTINGS SHALL MEET OR EXCEED AMERICAN NURSERY & LANDSCAPE ASSOC. AMERICAN STANDARD FOR NURSERY STOCK ANSI Z60.1 - 2004 CURRENT EDITION.
 6. PROVIDE CONTINUOUS MULCH BEDS FOR SHRUBS AND PERENNIALS, 3" DEEP WELL-ROTTED DARK MULCH.
 7. THE CONTRACTOR SHALL GUARANTEE ALL PLANTINGS AND TURF AREAS FOR 1-YEAR FROM THE TIME OF ACCEPTANCE OR REPLACEMENT.
 8. TREE REMOVAL AND TRIMMING SHALL BE BY A LICENSED ARBORIST. PRUNE TREES TO REMAIN NEAR BUILDINGS COURTYARD
 9. PLANT SUBSTITUTION MAY BE REQUIRED DEPENDING UPON PLANT AVAILABILITY AT THE TIME OF CONSTRUCTION. VERIFY WITH OWNER AND LANDSCAPE ARCHITECT.
 10. FINAL SELECTION OF PERENNIAL PLANTINGS MAY VARY WITH OWNER ARCHITECT APPROVAL.

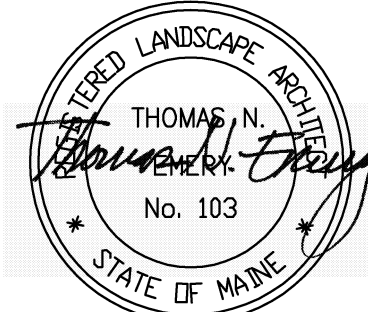
LANDSCAPE MAINTENANCE PLAN
LANDSCAPE MAINTENANCE SHALL FOLLOW INTEGRATED BEST MANAGEMENT PRACTICES (IBMP). ANY USE OF SOIL AMENDMENTS OR PESTICIDES SHALL BE APPROVED BY THE OWNER PRIOR TO APPLICATION AND APPLIED BY LICENSED APPLICATORS ONLY. AS MAY BE REQUIRED BY MAINE LAW.
SPRING
EDGE, CLEAN, AND MULCH ALL PLANT BEDS
REMOVE WEEDS FROM PLANT BEDS
AMEND LAWN AREAS AS SOIL TEST INDICATE
PREPARE IRRIGATION SYSTEM IF APPLICABLE
PRUNE AND REMOVE DAMAGED PLANT PARTS
REPAIR/REPLACE WINTER DAMAGE
SUMMER
WEEKLY MOWING LAWN AREAS - MULCHING MOWERS
WEEKLY & BI-WEEKLY PLANT BEDS AS CONDITIONS WARRANT
MONTHLY EDGING OF PLANT BEDS
IRRIGATION AS CONDITIONS WARRANT IF APPLICABLE
INSPECTION FOR INSECT AND HEAT DAMAGE
FALL
REMOVE MULCH LEAVES AND DEBRIS
TRIM ALL PERENNIALS EXCEPT FOR SEED HEADS FOR BIRDS
PROTECT AND MULCH TENDER PLANTS
TEXT PLANTS SUSCEPTIBLE TO SNOW DAMAGE
MARK STAKE PAVEMENT EDGES FOR WINTER MAINTENANCE
WINTERIZE IRRIGATION SYSTEM IF APPLICABLE
INSTALL NEW REPLACEMENT PLANTS (FALL PLANTS ONLY)



GRAPHIC SCALE
0 10 20
(1 inch = 30 feet)

DEVELOPMENT REVIEW APPLICATION
JUNE 5, 2020

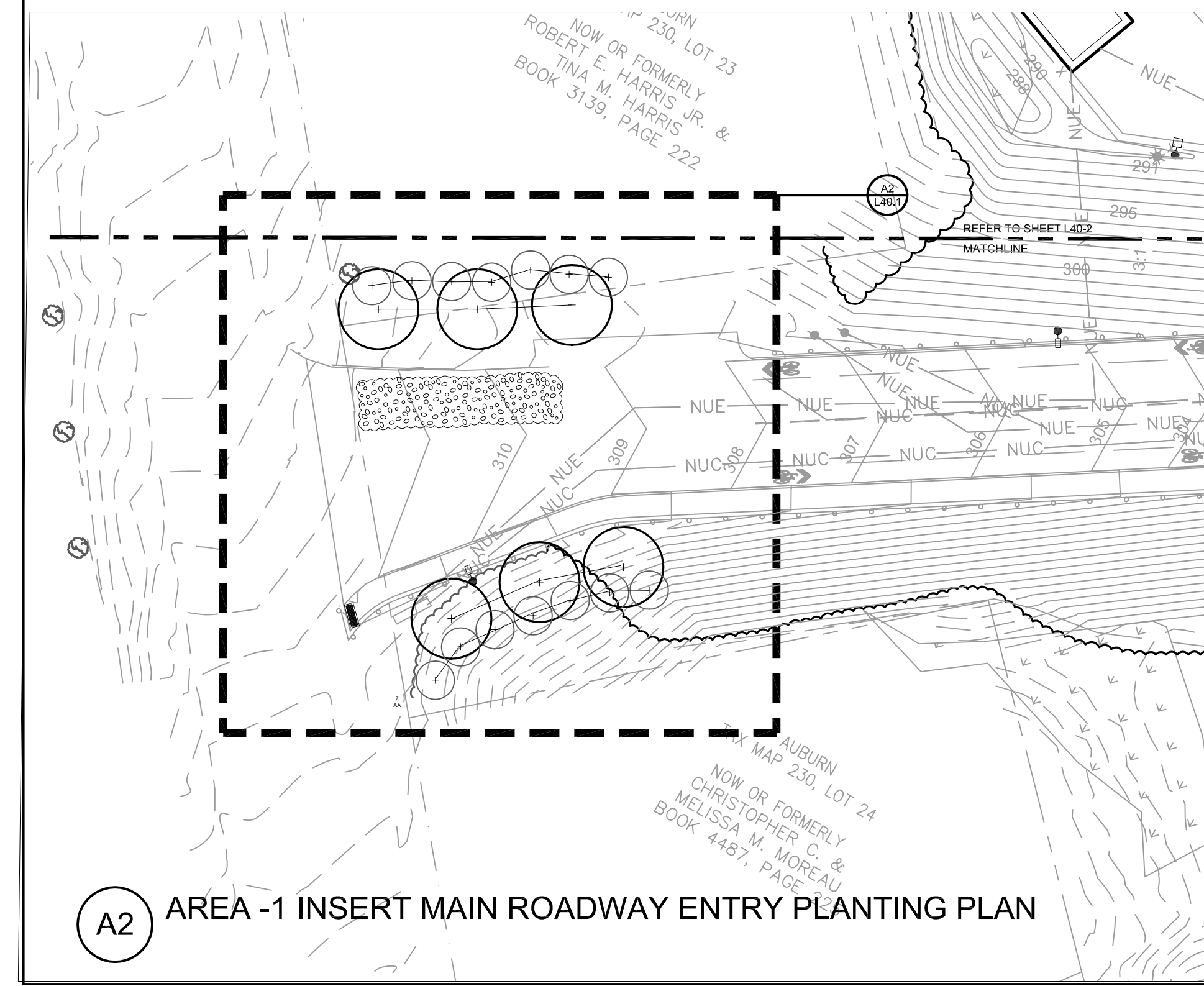
Rev	Date	Revision Description



Drawing Scales	

PLANTING PLAN

L40-1



A2 AREA -1 INSERT MAIN ROADWAY ENTRY PLANTING PLAN

A1 AREA -1 PLANTING PLAN

SCALE: 1"=30'

NOTE: *SEE LANDSCAPE PLANS FOR PLANT LABELS AND PLANT COUNTS (TYPICAL). WHERE THERE IS A DISCREPANCY BETWEEN THE PLANTING PLAN AND PLANT LIST, THE GREATER QUANTITY SHALL PREVAIL. THE LANDSCAPE CONTRACTOR SHALL CONFIRM THE TOTAL NUMBERS AND AVAILABILITY FOR ALL PLANTS. WHERE NO QUANTITY IS INDICATED (-), PLANTS NOT USED.

SHADE TREE 2.5' - 12' CALIBER
(STREET TREES, PARKING LOT, OPEN AREA)

UNDERSTORY FLOWER TREE 1.5', 2' CALIBER
(PARKING LOTS, WALKS, COURTYARD, OPEN AREA)

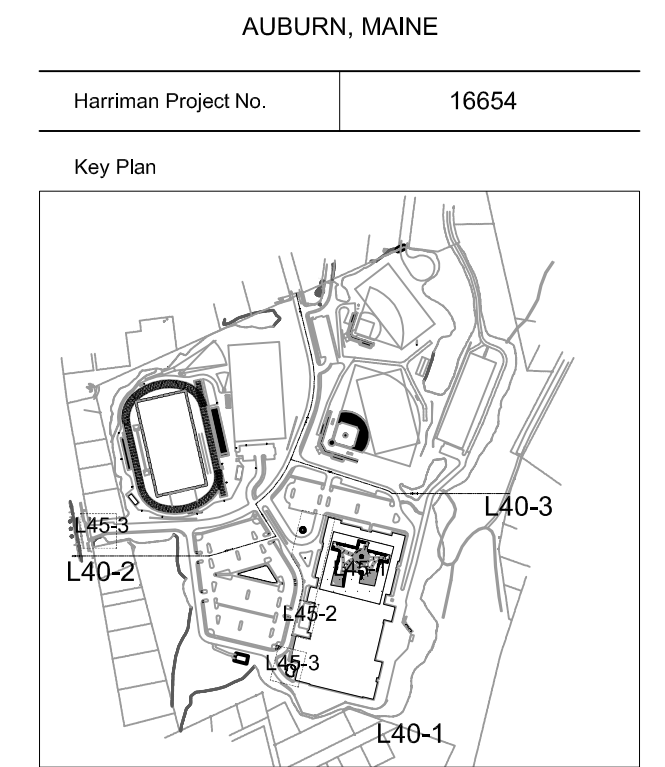
FLOWERING TREE 12' HT
(WALKS, BUSINESS AREA, COURTYARD)

LARGE SHRUB 5-6' HT

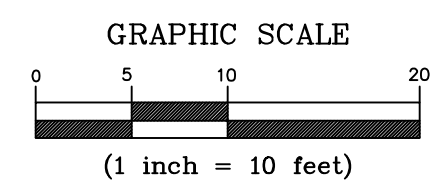
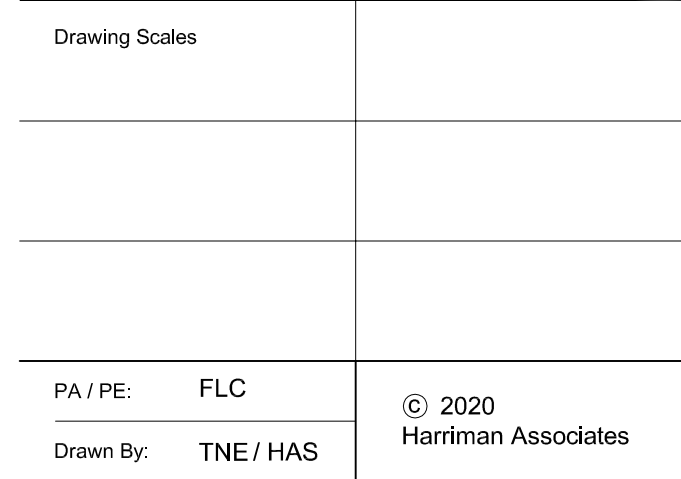
SHRUB 3' HT

PLANT QUANTITY
KEY TO PLANT MATERIAL SCHEDULE

2
AR



1. SEE SHEET C001 - GRADING AND DRAINAGE PLAN
2. SEE SHEET C001 - GRADING AND DRAINAGE PLAN
3. & LOAD & SOIL DISTURBED AREAS MUST NOT OTHERWISE BE EXPOSED TO WEATHER
4. ALL PLANTINGS SHALL MEET OR EXCEED AMERICAN NATURAL LANDSCAPE DESIGN STANDARDS FOR NURSERY STOCK JANUARY 2001 - 2004 CURRENT EDITION
5. PROVIDE CONTINUOUS MULCH BEDS FOR SHRUBS AND PERENNIALS, 3" DEEP WELL-ROOTED BARK MULCH. MULCH SHALL BE APPLIED TO ALL PLANTED AREAS, ALL PLANTINGS AND TURF AREAS FOR 1-YEAR FROM THE DATE OF PLANTING
6. TREE REMOVAL AND TRIMMING SHALL BE BY A LICENSED ARBORIST. PRUNE TREES TO REMAIN NEAR BUILDING
7. PLANT SUBSTITUTION MAY BE REQUIRED DEPENDING UPON AVAILABILITY OF SPECIES
8. CONSTRUCTION VERIFY WITH OWNER AND LANDSCAPE ARCHITECT
9. FINAL SELECTION OF PERENNIAL PLANTINGS MAY BE MADE BY THE OWNER WITH APPROVAL
10. LANDSCAPE MAINTENANCE PLAN FOLLOWING INTEGRATED BEST MANAGEMENT PRACTICES (BMP), ANY USE OF SOIL OR FERTILIZER SHALL BE APPROVED BY THE OWNER PRIOR TO APPLICATION AND APPLIED BY THE OWNER OR CONTRACTORS ONLY. A PLAN MAY BE REQUIRED BY SPRING LAWN
11. EDGE, GUTTER, AND MULCH PLANT BEDS REPAIR: AERATE LAWN AREAS, REMOVE DEBRIS AND WEEDS, AND SOIL TOPDRESSING
12. PREPARE IRRIGATION SYSTEM IF APPLICABLE
13. PREPARE ANNUAL PLANTINGS IF APPLICABLE
14. PREPARE ANNUAL PLANTINGS IF APPLICABLE
15. REPAIR, REPLACE WATER DAMAGE
16. SUMMER
17. WEEKLY MOWING LAWN AREAS - MULCHING MOVERS MUST BE USED TO PREPARE LAWN AS CONDITIONS WARRANT
18. MONTHLY EDGING OF PLANT BEDS
19. PREPARE ANNUAL PLANTINGS IF APPLICABLE
20. INSPECTION FOR INSECT AND HEDGE DAMAGE
21. LAWN
22. REMOVE MULCH PERENNIALS AND DEBRIS
23. WITH ALL PERENNIALS EXCEPT FOR SEEDS FOR BIRDS
24. PROTECT AND MULCH TREND PLANTS
25. TREND PLANTS SUSCEPTIBLE TO SNOW DAMAGE
26. MARK STAKE PAVEMENT EDGES FOR WINTER
27. WINTER
28. WINTER IRRIGATION SYSTEM IF APPLICABLE
29. INSTALL NEW REPLACEMENT PLANTS (ALL PLANTS

[illegible]

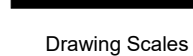
L45-1





AUBURN, MAINE

Harriman Project No.	16654
Key Plan	

[illegible]

PA / PE:	FLC	© 2020 Harriman Associates
Drawn By:	TNE/ TNE	

L50-1

